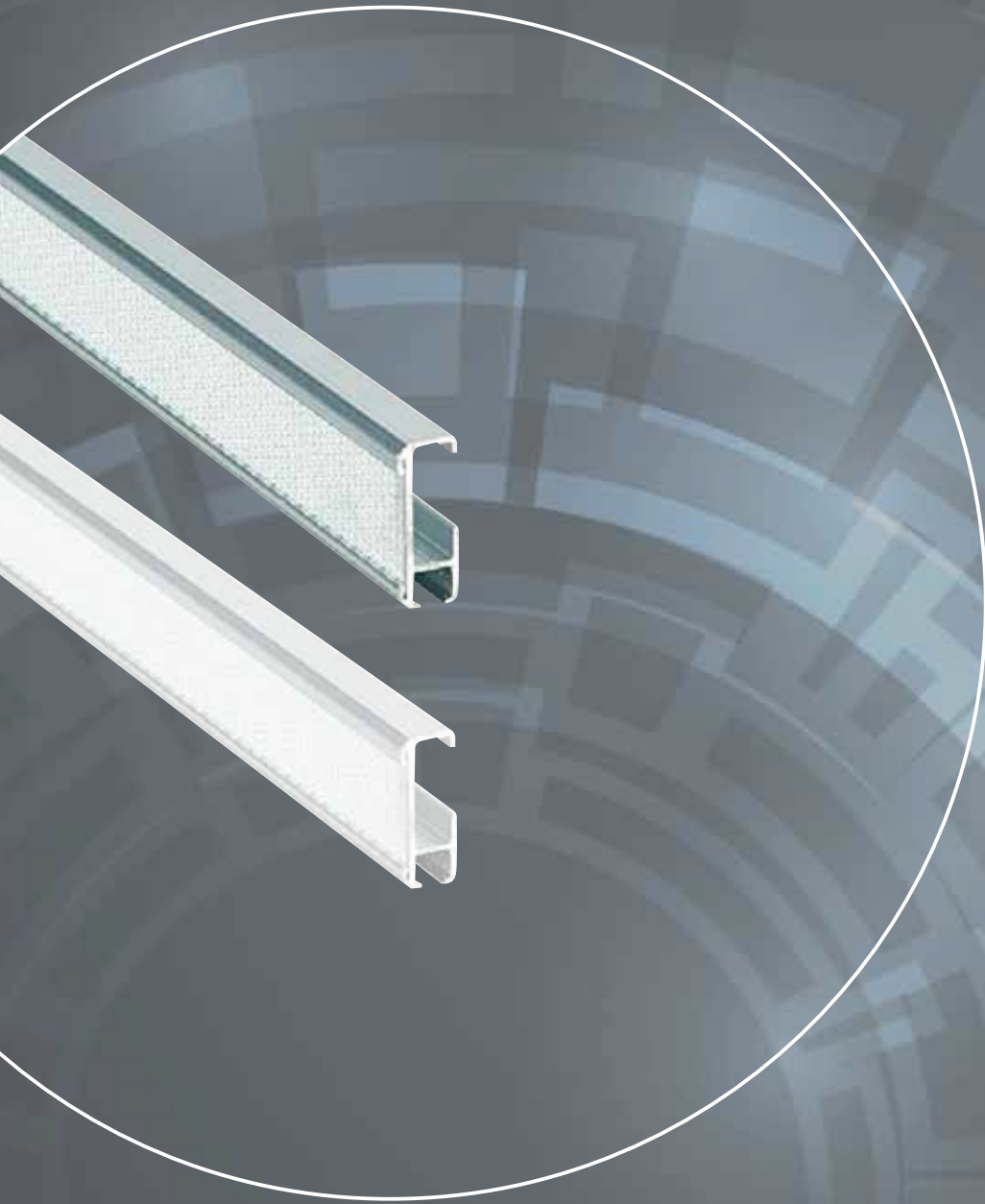


specification sheet
**AVR6 RAFF
BLIND SYSTEM**



Fitting information

- Recommended fixing points:



The dimensions shown are for information only. The distances between the brackets are variable and depend on the weight and the fullness of the curtain to be hung.

- Mounting options



- Wall mount with the following angle brackets: 2371, 6092, 6099, 4036



- Ceiling mount with the following bracket: 6091



Additional accessories

- End stop (ref. 4013)



Blind system accessories



Pulley stop (ref. 6102)



Counter weight (ref. 6129)



Cord conductor (ref. 6101)



Tension bar (4mm PE fiberglass - ref. 6103/4)
Tension bar (6 mm PE fiberglass - ref. 6103/6)
Tension bar (8 mm alu - ref. 6110)

Cord 1 mm nylon (ref. 6108/20)



Snap hook (ref. 6109)



Balasting bar (12x2 mm alu - ref. 12/2 alu)
Balasting bar (20x4 mm alu - ref. 2092)

Cord collector (ref. 6105)



Cord knob (ref. 6106)

